

Optimising Home Cinema Audio

info@cinema-ats.com | www.cinema-ats.com



C-ATS PACK

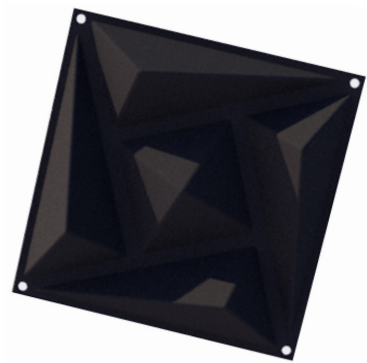
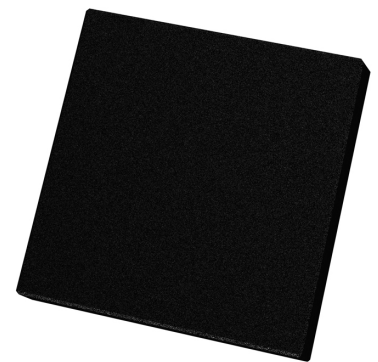
PACKAGED ACOUSTIC TREATMENT SYSTEM

Cinema-ATS Packs are a packaged acoustic treatment system containing:

- 12x C-ATS Foamsorbers and
- 12x C-ATS Scattering Panels

Cinema-ATS Foamsorber Panels

operate at frequencies above 125Hz and are used to control Reverberation within the C-ATS Packs system. Each Foamsorber is 300 x 300 x 50mm in size.



Cinema-ATS Scattering Panels

operate at frequencies above 350Hz and used to control Reflection within the C-ATS Packs System. Each Scattering Panel is 300 x 300 x 50mm in size.

Simple guidelines make it easy to create scalable systems that address the 3Rs of Acoustics whilst using the minimum possible install depth. C-ATS Packs is based around simple layout rules for each individual pack of panels. This makes it possible to create effective treatment systems ranging from just 2 to a maximum of 10 Packs. With C-ATS subwoofer location guide it is possible to address each of the 3Rs of Acoustics, Resonance, Reverberation and Reflection in just 50mm of depth.



Cinema Acoustic Treatment Systems is a British brand specialising in high performance acoustic treatment for residential cinemas.